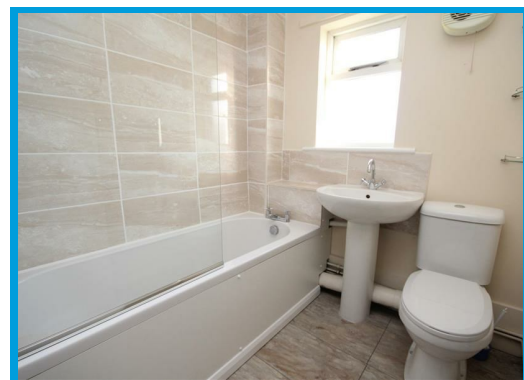




Tamarind Close, Guildford Surrey, GU2 9YY

Guide Price £350,000

**\*\*NO CHAIN\*\*** Located within a quiet residential location within easy access to Guildford town centre, this two bedroom house is presented in excellent order throughout.



# Description

**\*\* NO CHAIN\*\*** A charming property that could be your next dream home! This delightful house boasts a cosy reception room, perfect for relaxing or entertaining guests. With two spacious double bedrooms, there's plenty of room for a growing family or guests staying over.

The property features a well-maintained bathroom, ensuring your comfort and convenience. Step outside to discover your very own private garden, ideal for enjoying a cup of tea on a sunny morning or hosting a summer barbecue with friends and family.

Conveniently located with great access to Guildford town centre, you'll have all the amenities and entertainment options right at your doorstep. Parking is no hassle with residents parking on your doorstep, making your daily commute a breeze. Additionally, you'll find local amenities within walking distance, providing everything you need just a stone's throw away.

Don't miss out on this fantastic opportunity to own a lovely house in a sought-after location. Book a viewing today and envision the endless possibilities this property has to offer!

